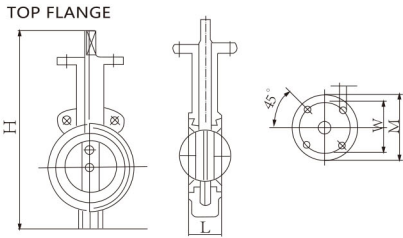




KS B 2813  
KCW-2015-0103



### Main parts and materials / Specification

Body		Grey iron
Seat		EPDM
Disc		Stainless steel
Applicable Fluid		Water
Working Pressure		Less than 10kgf/cm <sup>2</sup> (Max.1.0Mpa)
Applicable Temperature		Less than 80°C
Connection Method		10K Flange
Hydraulic Test	Body	15kgf/cm <sup>2</sup> (1.5Mpa)
	Seat	11kgf/cm <sup>2</sup> (1.1Mpa)

### LEVER / Outline and connecting measurement

Size	40	50	65	80	100	125	150
L	42	43	46	46	52	56	56
H	196	162	171	180	199	212	228

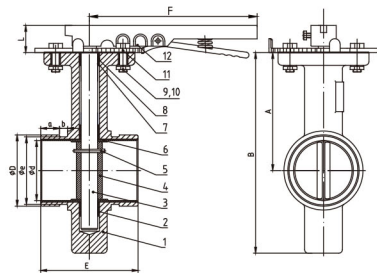
### GEAR / Outline and connecting measurement

Size	50	65	80	100	125	150	200	250	300	350
L	43	46	46	52	56	56	60	68	78	78
H	262	270	277	298	312	328	464	494	499	520

\*본 제품의 규격 및 사양은 성능 개선을 위해 예고없이 변경될 수 있습니다.

# 삭타일 10K GROOVED 버터플라이 밸브 (LEVER/GEAR)

템퍼스위치 부착 가능



### Main parts and materials / Specification

Body		GCD 450
Seat		EPDM
Disc		SSC 13
Applicable Fluid		Water
Working Pressure		Less than 10kgf/cm <sup>2</sup> (Max.2.0Mpa)
Applicable Temperature		Less than 80°C
Connection Method		10K Flange
Hydraulic Test	Body	15kgf/cm <sup>2</sup> (1.5Mpa)
	Seat	11kgf/cm <sup>2</sup> (1.1Mpa)

### LEVER / Outline and connecting measurement

Size	50	65	80	100	125	150
E	81	97	97	116	148	148
B	190	200	208	254	285	328

### GEAR / Outline and connecting measurement

Size	50	65	80	100	125	150
E	81	97	97	116	148	148
B	190	200	208	254	285	328

\*본 제품의 규격 및 사양은 성능 개선을 위해 예고없이 변경될 수 있습니다.