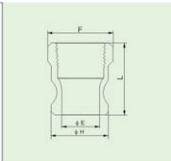


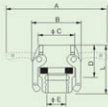
TYPE: A 尺寸
ADAPTOR FEMALE

Inch	mm	E	F	H	L
1/2"	15	14.3	29.3	24.3	41.3
3/4"	20	21.0	39.2	32	39.0
1"	25	23.8	43.8	36.6	48.5
1 1/4"	32	30.8	51.9	45.5	52.5
1 1/2"	40	36	32.3	53.4	56
2"	50	46.0	74.7	63	61.7
2 1/2"	65	58.0	82.3	75.9	68.0
3"	80	73.2	97.8	91.5	70.0
4"	100	98.2	126.8	119.5	74.6
6"	150	149	191	175.9	86



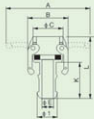
TYPE: B 尺寸
COUPLER MALE

inch	mm	A	B	C	D	E	L
1/2"	15	68.4	39.9	34.9	32.5	14.3	49.2
3/4"	20	116	53.3	41	32	19.0	51
1"	25	125	60.9	47	39	25.0	58
1 1/4"	32	181	82.6	58	44.5	32.6	67.2
1 1/2"	40	189	90.3	65	45.0	39.0	65.7
2"	50	199	99.8	75	50.0	50.8	75.4
2 1/2"	65	210	112.4	90	54.3	63.0	83.3
3"	80	254	137.6	108	55.5	76.2	86.5
4"	100	282	165.6	140	55.5	100.8	88.8
6"	150	409	255	198	73	146	116



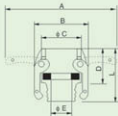
TYPE: C 尺寸
COUPLER HOSE SHANK

inch	mm	A	B	C	E	I	K	L
1/2"	15	68.4	39.9	34.9	8.0	14.6	41.3	84.9
3/4"	20	116	53.3	41	13.8	21.0	51	82.8
1"	25	125	60.9	47	19.8	27.0	57	95.2
1 1/4"	32	181	82.6	58	25.9	33.7	59	102.5
1 1/2"	40	189	90.3	65	32.3	40.1	61	104.0
2"	50	199	99.8	75	44.5	52.7	70	129.0
2 1/2"	65	210	112.4	91	56.7	66.3	79	142.3
3"	80	254	137.6	108	68.0	79.0	102	157.1
4"	100	282	166.6	140	93.4	104.4	108	163.5
6"	150	409	255	198	142	157	146	214



TYPE: D 尺寸
COUPLER FEMALE

inch	mm	A	B	C	D	E	L
1/2"	15	68.4	39.9	34.9	32.5	14.3	49.2
3/4"	20	116	53.3	41	32	21.0	51.0
1"	25	125	60.9	47	39	25.0	61.0
1 1/4"	32	181	82.6	58	44.5	34.9	67.5
1 1/2"	40	189	90.3	65	45.0	39.0	67.0
2"	50	199	99.8	75	50.0	50.8	72.2
2 1/2"	65	210	112.4	91	54.3	63.0	83.3
3"	80	254	137.6	108	55.5	76.2	86.5
4"	100	282	166.6	140	55.5	100.8	88.8
6"	150	409	255	198	74	146	114



TYPE: E 尺寸
ADAPTOR HOSE SHANK



inch	mm	D	E	F	H	L
1/2"	15	34.1	14.3	29.3	24.3	48.8
3/4"	20	39.0	21.0	39.2	32	58.0
1"	25	48.5	23.8	43.8	36.5	67.5
1 1/4"	32	52.5	30.8	51.9	45.5	73.2
1 1/2"	40	54.0	38.5	60.4	53.4	74.7
2"	50	61.7	46.7	74.7	63	87.1
2 1/2"	65	68.0	58.0	82.3	75.9	97.0
3"	80	70.0	73.2	97.8	91.5	101.0
4"	100	74.6	98.2	126.8	119.5	107.9
6"	150	83	149	196	175.9	127

TYPE: F 尺寸
ADAPTOR MALE



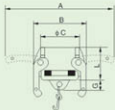
inch	mm	D	E	F	H	L
1/2"	15	34.1	14.3	29.3	24.3	48.8
3/4"	20	39.0	21.0	39.2	32	58.0
1"	25	48.5	23.8	43.8	36.5	67.5
1 1/4"	32	52.5	30.8	51.9	45.5	73.2
1 1/2"	40	54.0	38.5	60.4	53.4	74.7
2"	50	61.7	46.7	74.7	63	87.1
2 1/2"	65	68.0	58.0	82.3	75.9	97.0
3"	80	70.0	73.2	97.8	91.5	101.0
4"	100	74.6	98.2	126.8	119.5	107.9
6"	150	83	149	196	175.9	127

TYPE: DP 尺寸
DUST PLUG



inch	mm	G	H	L		
1/2"	15	9.5	24.3	26.2		
3/4"	20	12	32	27.5		
1"	25	13	36.5	36.5		
1 1/4"	32	14	45.5	42.0		
1 1/2"	40	16	53.4	44.0		
2"	50	19	63	50.8		
2 1/2"	65	11	75.9	53.0		
3"	80	11	91.5	55.0		
4"	100	13	119.5	52.6		
6"	150	16	175.9	60		

TYPE: DC 尺寸
DUST CAP



inch	mm	A	B	C	G	L
1/2"	15	68.4	39.9	34.9	9.5	32.5
3/4"	20	116	53.3	41	10	34.0
1"	25	125	60.9	47	12	41.0
1 1/4"	32	181	82.6	58	11	46.5
1 1/2"	40	189	90.3	65	12	53.2
2"	50	199	99.8	75	12	53.2
2 1/2"	65	210	112.4	90	14	57.8
3"	80	254	137.6	108	15	59.5
4"	100	282	165.5	140	12	60.0
6"	150	409	255	198	16	68